



Title Plan - LT 525161

Survey Number LT 525161
Surveyor Reference E19430 Rosemerryn Stage 12
Surveyor Kevin Martin Hayes
Survey Firm Davie Lovell-Smith Ltd
Surveyor Declaration I Kevin Martin Hayes, being a licensed cadastral surveyor, certify that:
(a) this dataset provided by me and its related survey are accurate, correct and in accordance with the Cadastral Survey Act 2002 and the Rules for Cadastral Survey 2010, and
(b) the survey was undertaken by me or under my personal direction.
Declared on 13 Jul 2018 04:26 PM

Survey Details

Dataset Description Lots 372-376, 420-440, 474, 705, and 7001 being subdivision of Lot 704 DP 520335
Status Approved as to Survey
Land District Canterbury **Survey Class** Class A
Submitted Date 13/07/2018 **Survey Approval Date** 27/07/2018
Deposit Date

Territorial Authorities

Selwyn District

Comprised In

CT 823133

Created Parcels

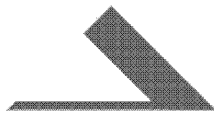
Parcels	Parcel Intent	Area	CT Reference
Area S Deposited Plan 525161	Easement		
Lot 372 Deposited Plan 525161	Fee Simple Title	0.0429 Ha	839597
Lot 373 Deposited Plan 525161	Fee Simple Title	0.0436 Ha	839598
Lot 374 Deposited Plan 525161	Fee Simple Title	0.0608 Ha	839599
Lot 375 Deposited Plan 525161	Fee Simple Title	0.0608 Ha	839600
Lot 376 Deposited Plan 525161	Fee Simple Title	0.0589 Ha	839601
Lot 420 Deposited Plan 525161	Fee Simple Title	0.0694 Ha	839602
Lot 421 Deposited Plan 525161	Fee Simple Title	0.0907 Ha	839603
Lot 422 Deposited Plan 525161	Fee Simple Title	0.0699 Ha	839604
Lot 423 Deposited Plan 525161	Fee Simple Title	0.0590 Ha	839605
Lot 424 Deposited Plan 525161	Fee Simple Title	0.0522 Ha	839606
Lot 425 Deposited Plan 525161	Fee Simple Title	0.0507 Ha	839607
Lot 426 Deposited Plan 525161	Fee Simple Title	0.0508 Ha	839608
Lot 427 Deposited Plan 525161	Fee Simple Title	0.0476 Ha	839609
Lot 428 Deposited Plan 525161	Fee Simple Title	0.0432 Ha	839610
Lot 429 Deposited Plan 525161	Fee Simple Title	0.0476 Ha	839611
Lot 430 Deposited Plan 525161	Fee Simple Title	0.0520 Ha	839612
Lot 431 Deposited Plan 525161	Fee Simple Title	0.0520 Ha	839613
Lot 432 Deposited Plan 525161	Fee Simple Title	0.0520 Ha	839614
Lot 433 Deposited Plan 525161	Fee Simple Title	0.0520 Ha	839615



Title Plan - LT 525161

Created Parcels

Parcels	Parcel Intent	Area	CT Reference
Lot 434 Deposited Plan 525161	Fee Simple Title	0.0510 Ha	839616
Lot 435 Deposited Plan 525161	Fee Simple Title	0.0495 Ha	839617
Lot 436 Deposited Plan 525161	Fee Simple Title	0.0720 Ha	839618
Lot 437 Deposited Plan 525161	Fee Simple Title	0.0682 Ha	839619
Lot 438 Deposited Plan 525161	Fee Simple Title	0.0682 Ha	839620
Lot 439 Deposited Plan 525161	Fee Simple Title	0.0682 Ha	839621
Lot 440 Deposited Plan 525161	Fee Simple Title	0.0682 Ha	839622
Lot 474 Deposited Plan 525161	Fee Simple Title	0.0477 Ha	839623
Lot 705 Deposited Plan 525161	Fee Simple Title	54.5008 Ha	839624
Lot 7001 Deposited Plan 525161	Vesting on Deposit for Road	0.6156 Ha	
Area A Deposited Plan 525161	Easement		
Area B Deposited Plan 525161	Easement		
Area N Deposited Plan 525161	Easement		
Area O Deposited Plan 525161	Easement		
Area P Deposited Plan 525161	Easement		
Area Q Deposited Plan 525161	Easement		
Area X Deposited Plan 525161	Easement		
Total Area		<hr/> 56.6655 Ha	



DAVIE LOVELL·SMITH

PLANNING SURVEYING ENGINEERING

Davie, Lovell-Smith Ltd
 116 Wrights Road,
 PO Box 679, Christchurch 1,
 New Zealand
 Telephone (03) 379-0793,
 E-mail: office@dls.co.nz

Our Ref: E19430

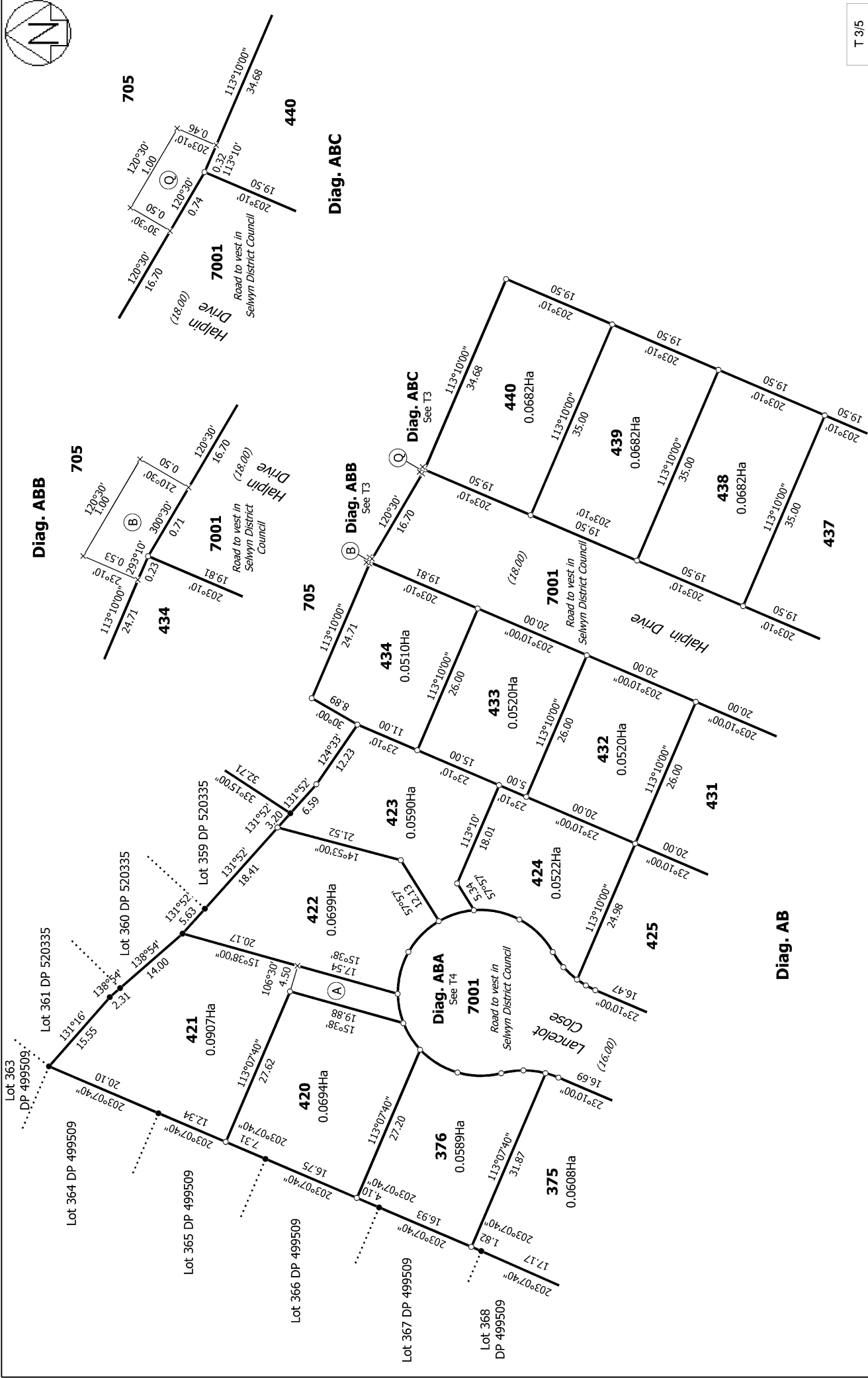
D.P.525161

SCHEDULE OF EASEMENTS IN GROSS

Purpose	Servient Tenement	Shown	Grantee
Right to convey telecommunications and computer media in gross	Lot 421	A	Enable Networks Limited
Right to convey electricity in gross.	Lot 705	B, Q & S	Orion New Zealand Limited

SCHEDULE OF EXISTING EASEMENTS

Purpose	Servient Tenement	Shown	Document
Right to drain water in gross.	Lot 705	P	EI 9370643.10
Right of way and right to convey electricity.	Lot 705	N	EI 10715212.6
Right to drain water in gross.	Lot 705	N & O	EI 10715212.7
Right to convey electricity in gross.	Lot 705	N	EI 10715212.9
Right to convey electricity in gross	Lot 705	X	EI 11036096.4



T 3/5

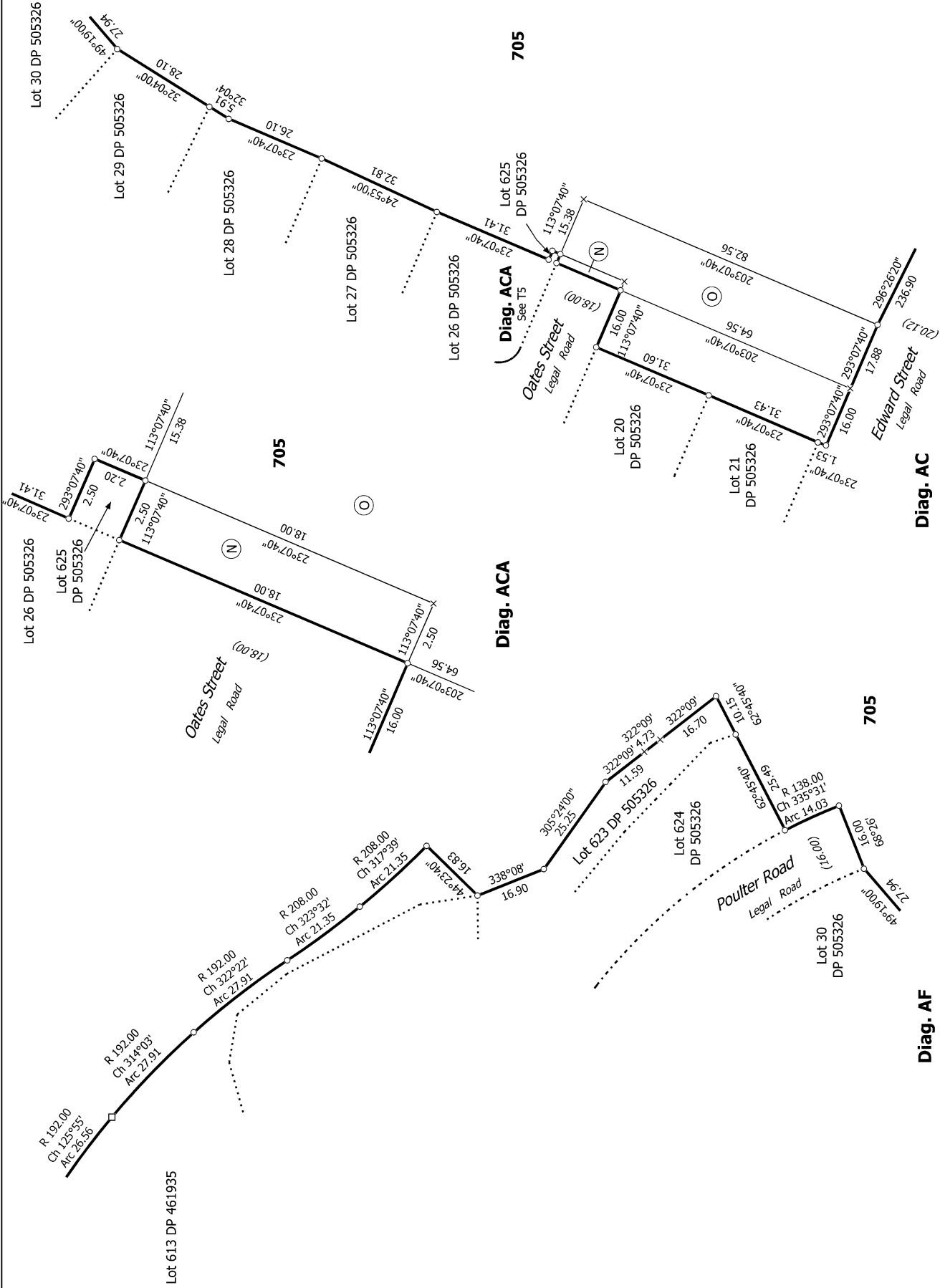
Land District: Canterbury

Digitally Generated Plan
Generated on: 27/07/2018 3:21pm Page 6 of 6

Lots 372-376, 420-440, 474, 705, and 7001 being subdivision of Lot 704 DP 520335

Surveyor: Kevin Martin Hayes
Firm: Davie Lovell-Smith Ltd

Title Plan
LT 525161
Approved on: 27/07/2018



T 5/5

Land District: Canterbury

Digitally Generated Plan
Generated on: 27/07/2018 3:21pm Page 8 of 8

Diag. AC
Lots 372-376, 420-440, 474, 705, and 7001 being subdivision of Lot 704 DP 520335

Surveyor: Kevin Martin Hayes
Firm: Davie Lovell-Smith Ltd

Title Plan
LT 525161
Approved on: 27/07/2018